

List

Scientific name	status	Common Name	Description
<i>Acacia melanoxylon</i>		blackwood	tree to 30m; leaves with parallel veins; round flower heads
<i>Acacia mucronata</i>		caterpillar wattle	erect shrub/small tree; leaves narrow linear to 15cm long with short narrow point; yellow flowers in spikes
<i>Acacia myrtifolia</i>		redstem wattle	shrub to 2m; stems red; leaves to 5cm, leathery, single vein; flowers cream in spherical heads
<i>Acacia stricta</i>		hop wattle	shrub with ridged stems; leaves grey-green, to 10cm long; paired balls of pale yellow flowers in leaf axils
<i>Acacia suaveolens</i>		sweet wattle	shrub to 2 m; phyllodes blue/green to 15 cm; flowers round, cream, in axils, sweet scented.
<i>Acacia terminalis</i>		sunshine wattle	shrub to 4m high; leaves feathery; flowers in bunches of spherical heads
<i>Acacia ulicifolia</i>		juniper wattle	shrub to 50cm high; leaves narrow, linear, pungent pointed; flowers in cream/yellow spherical heads
<i>Acacia verticillata</i>		prickly moses	shrub/tree to 6 m; phyllodes in whorls, sharp; flowers yellow, in spikes.
<i>Acaena novae-zelandiae</i>		common buzzy	herb; leaves divided; balls of flower/seeds with hooks
<i>Acaena ovina</i>		hairy sheepsburr	herb to 60cm high; leaves feathery, sparsely hairy above, densely hairy below; spikes of hooked flowers/seeds
<i>Acrotriche serrulata</i>		ants delight	dark green low shrub; prickly leaves; flowers underneath
<i>Actites megalocarpus</i>		dune thistle	perennial herb to 60cm; leaves in basal rosette; leaves to 15cm, lobed, prickly; yellow daisy flowers
<i>Ajuga australis</i>		australian bugle	
<i>Allocasuarina monilifera</i>	e	necklace sheoak	shrub to 4m; leaves like tiny teeth around joints in neele-like branchlets; fruit, cylindrical cones with pointed ends
<i>Allocasuarina zephyrea</i>	e	western sheoak	shrub to 2m; leaves are small teeth on needle-like branchlets; flowers m & f separate; cones to 3.5cm
<i>Almaleea subumbellata</i>		wiry bushpea	shrub to 90 cm; leaves oblong to 8 mm; yellow/orange pea flowers in bunches at ends of stems
<i>Alyxia buxifolia</i>		seabox	shrub to 2.5m; leaves tough, dark green, glossy, to 3.5cm; flowers white, 5 petals; fruit orange to red

List

<i>Amperea xiphioclada</i>		broom spurge	almost leafless with angles stems, forms clumps resembling grass tussock
<i>Aotus ericoides</i>		golden pea	shrub to 1.5m; leaves narrow to 12mm long, margins downrolled; yellow pea flower with red throat
<i>Apium prostratum</i>		creeping sea-celery	perennial herb; stems ridged; leaves to 6cm, deeply divided; flowers in dense heads, white, small
<i>Argentipallium dealbatum</i>		white everlasting	herb to 25cm; leaves elliptic, dark green above, white hairy under; flower buds red, flowers single, white, papery
<i>Atherosperma moschatum</i>		sassafras	tree to 25m; leaves to 8cm elliptical, margins often toothed; flowers white, in pairs, pendulous, 4-petalled. Male and female flowers on same or separate trees
<i>Atriplex cinerea</i>		grey saltbush	shrub to 1.5m high; leaves white/grey, scaly, oblong to 6cm long; flowers unisexual, in dense clusters
<i>Baeckea leptocaulis</i>	e	slender heathmyrtle	
<i>Banksia marginata</i>		silver banksia	tree with typical banksia cones or yellow flower spikes
<i>Banksia serrata</i>		saw banksia	shrub or tree to 15m high; leaves to 20cm long, edges sharply serrated; flowers in a dense cylindrical spike, green to yellow
<i>Bauera rubioides</i>		wiry bauera	sprawling wiry shrub; leaves opposite, each with three leaflets; flowers white to pink
<i>Billardiera macrantha</i>		forest appleberry	vine clammers over other plants; leaves lance-like to 5cm; flowers tubular, yellow/green; fruit blue/purple
<i>Billardiera ovalis</i>	e	seaspray appleberry	coastal creeper; leaves to 14mm, thick, pale green; flowers tubular; cream/yellow; fruit red
<i>Blandfordia punicea</i>	e	christmas bells	lily-like herb; leaves strap-like to 1.5m; flowers tubular, red/orange externally yellow internally to 45mm long
<i>Boronia anemonifolia</i>		stinky boronia	shrub to 2m high; leaves dark green, with 3 leaflets, to 1.5cm long; flowers 4-petalled, white/pink
<i>Boronia nana</i>			
<i>Boronia parviflora</i>		swamp boronia	prostrate or dwarf shrub; leaves to 2 cm; flowers small with 4 pointed petals.
<i>Boronia pilosa</i>		hairy boronia	shrub to 1m; leaves divided with 3-7 leaflets; flowers white to pink with four petals
<i>Bossiaea cinerea</i>		showy bossia	shrub with gold/brown pea flowers
<i>Bossiaea cordigera</i>		wiry bossia	shrub to 40cm; leaves small, heart-shaped; pea flowers yellow with red centre & outside
<i>Bossiaea prostrata</i>		creeping bossia	wiry prostrate stems; yellow & crimson pea flowers
<i>Brachyloma ciliatum</i>		fringed heath	shrub, wiry to 30cm high; leaves oblong to ovate, pungent pointed, to 10mm long; flowers solitary, white, tubular with hairs at throat
<i>Bursaria spinosa</i>		prickly box	small tree; distinctive "purses" (seed cases); white starry flowers

List

<i>Calandrinia calyptрата</i>	pink purslane	herb, spreading to 25cm diam; leaves linear, often cylindrical, fleshy, flowers small, in loose terminal groups
<i>Calytrix tetragona</i>	common fringemyrtle	shrub; star-like white flowers
<i>Cardamine gunnii</i>	tuberous bittercress	
<i>Carpobrotus rossii</i>	native pigface	herb, prostrate, spreading; leaves fleshy, triangular x-section; flowers large, pink/purple, white centres
<i>Cassinia aculeata</i>	dolly bush	shrub to 3 m; large clusters of small white flowers
<i>Cassytha glabella</i>	slender dodderlaurel	slender parasitic twiner; appears leafless; tiny white flowers in bunches on short stalks
<i>Cassytha melantha</i>	large dodderlaurel	"monkey twine", parasitic on other plants
<i>Cassytha pubescens</i>	downy dodderlaurel	parasitic twiner; appears leafless; flowers small, white, crowded in groups/spikes
<i>Centella cordifolia</i>	swampwort	prostrate marsh herb; leaves almost circular; flowers small, pink in clusters on short stalks
<i>Chrysocephalum apiculat</i>	common everlasting	perennial herb to 50cm; stem & leaves densely hairy; golden daisy flowers in clusters
<i>Clematis microphylla</i>	small-leaf clematis	climber to 3m high; leaves twice divided, leaflets to 3cm long; flowers 4 "petalled", cream
<i>Convolvulus angustissim</i>	bindweed	herb; prostrate; conspicuous pink funnel-shaped flowers
<i>Coprosma hirtella</i>	coffeeberry	shrub to 2m; leaves dark green, leathery to 6cm long, pointed tip; fruit red/black, fleshy
<i>Coprosma quadrifida</i>	native currant	erect shrub to 4m; leaves to 10mm; flowers, male & female on separate plants, 4 white petals; fruit shiny red/orange
<i>Cotula australis</i>	southern buttons	small herb, often prostrate; leaves once or twice divided, hairy; flower head solitary, 5mm diam, cream on long stalk
<i>Daucus glochidiatus</i>	australian carrot	variable herb, 5-60 cm high; leaves deeply divided; flowers small, white, in flat-topped clusters
<i>Daviesia ulicifolia</i>	yellow spiky bitterpea	prickly woody shrub to 2 m; leaves spiky to 3 cm; yellow pea flowers with reddish markings.
<i>Dichondra repens</i>	kidneyweed	creeping herb, forming patches; kidney shaped leaves; tiny green/white flowers
<i>Dillwynia cinerascens</i>	grey parrotpea	slender shrub to 90cm; leaves hairy, narrow cylindrical; golden pea flowers
<i>Dillwynia glaberrima</i>	smooth parrotpea	slender shrub to 90cm; leaves hairless, narrow cylindrical; golden pea flowers
<i>Dillwynia sericea</i>	showy parrotpea	shrub to 60cm high; leaves cylindrical, to 2cm long, grooved on upper surface; pea flowers orange/yellow, very broad
<i>Disphyma crassifolium</i>	roundleaf pigface	fleshy, perennial, prostrate herb; leaves circular in x-section; flowers pink/white, 3-4cm diam
<i>Drosera auriculata</i>	tall sundew	herb; fine stem; leaves fringed with glistening hairs

List

<i>Drosera binata</i>	forked sundew	herb; leaves forked, on long stem, blades with glistening hairs; flowers white, to 2cm diam, in groups of up to 40
<i>Drosera gunniana</i>	pale sundew	erect herb to 30cm high; leaves at base round on stem crescent shaped, fringed with glistening hairs; flowers white or pink
<i>Drosera macrantha</i>	sundew	herb; fine stem with round leaves fringed with glistening hairs
<i>Drosera pygmaea</i>	dwarf sundew	tiny carnivorous herb; leaves round, fringed with hairs, in basal rosette; tiny single white flower
<i>Drosera spatulata</i>	ray sundew	herb; leaves in a rosette, red, appressed to ground; flowers white in 1 or 2 groups of several flowers
<i>Epacris impressa</i>	common heath	shrub; white, red or pink tubular flowers with dimples at base
<i>Epacris lanuginosa</i>	swamp heath	erect narrow shrub to 1.5m; leaves narrow lance-shaped with sharp point; flowers white, tubular in clusters
<i>Epacris obtusifolia</i>	bluntleaf heath	shrub to 1m high; leaves to 10mm long, elliptical, blunt, appressed to stem; flowers white/cream, tubular
<i>Epilobium billardioreanun</i>		
<i>Eucalyptus obliqua</i>	stringybark	tree to 90m; trunk & branches covered in soft, ridged bark; leaves very unsymmetrical;
<i>Eucalyptus ovata</i>	black gum	large gum tree; rough grey bark; oval leaves
<i>Euchiton involucratus</i>	star cottonleaf	herb with white hairy stem to 40cm high; leaves white under; flowers in dense globular heads
<i>Euryomyrtus ramosissima</i>	rosy heathmyrtle	shrub to 50cm; leaves linear to 10mm; flowers ca 10mm diam, 5 white/pink petals
<i>Exocarpos cupressiformis</i>	common native-cherry	tree; conifer-like foliage; edible orange coloured fruit
<i>Galium australe</i>	coast bedstraw	perennial herb with straggling stems; leaves in whorls of 4; flowers small, white, in groups of 1-4 along stem
<i>Gaultheria hispida</i>	copperleaf snowberry	shrub to 1m; leaves dark green, edges serrated; flowers urn shaped, white/pink; fruit white, fleshy
<i>Geranium solanderi</i>	southern cranesbill	perennial herb; leaves round, deeply divided; flowers pink, usually paired
<i>Glycine clandestina</i>	twining glycine	climber with trifoliolate leaves & purple flowers
<i>Gompholobium huegelii</i>	common wedgepea	herb; pea flower yellow inside and blackish outside
<i>Gonocarpus tetragynus</i>	common raspwort	herb with rough stems to 50cm; leaves to 1cm; flowers reddish at ends of branches
<i>Gonocarpus teucroides</i>	forest raspwort	perennial herb to 60 cm; leaves oval and rough to touch; flowers on leafy spikes with petals often fallen.
<i>Goodenia ovata</i>	hop native-primrose	shrub to 2m; leaves bright green, to 6cm, edges toothed; flowers yellow with petals in two groups
<i>Goodenia radicans</i>	shiny swamp mat	creeping herb, rooting at leaf nodes and with 5 petal white, fan flowers

List

<i>Goodia lotifolia</i>	smooth goldentip	shrub to 4m high; leaves with 3 leaflets;
<i>Hakea decurrens</i>	bushy needlebush	shrub to 4m high; leaves needle-like, sharply pointed, to 9cm long; flowers pink or white, spider-like; fruit woody, conical
<i>Helichrysum luteoalbum</i>	jersey cudweed	weedy native, erect with woolly leaves and small, round flowers with golden bracts
<i>Hibbertia acicularis</i>	prickly guineaflower	shrub to 30cm high; leaves narrow, sharply pointed, to 10mm long; flowers small, yellow, single on stem
<i>Hibbertia procumbens</i>	spreading guineaflower	prostrate shrub spreading to 30cm; leaves to 2cm long, edges rolled under; flowers large, yellow very numerous
<i>Hibbertia prostrata</i>	prostrate guineaflower	yellow symmetric five-petal flowers; narrow leaves
<i>Hibbertia sericea</i>	silky guineaflower	shrub to 60cm high; leaves slightly hairy above, densely hairy uncer; flowers bright yellow, petals notched at tip
<i>Hydrocotyle hirta</i>	hairy pennywort	mat-forming herb with hairy stems; leaves to 25 mm, rounded to kidney shaped with lobed edges; flowers in tight clusters on stem opposite the leaves.
<i>Indigofera australis</i>	native indigo	shrub to 1.5m high; leaves feather-like, to 10 leaflets; pea flowers pink/mauve, crowded along branches
<i>Kennedia prostrata</i>	running postman	herb; prostrate & sprawling; leaves with 3 leaflets; crimson pea flower
<i>Lagenophora stipitata</i>	blue bottledaisy	rosette herb; leaves hairy, to 8cm long; single flower head white or purplish on long hairy stem
<i>Lasiopetalum baueri</i>	slender velvetbush	shrub to 1.5m high; leaves linear, to 7cm long, darker above, hairy under; flowers in drooping clusters, pink or white
<i>Lasiopetalum macrophyll</i>	shrubby velvetbush	shrub to 2m high; leaves ovate to 10cm long, rusty hairs along veins, white/green under; flowers small, white, in pendant clusters
<i>Leptinella reptans</i>	creeping buttons	herb, creeping stems, prostrate; leaves hairy, twice divided; flower heads 8mm diam, yellow, on slender stems
<i>Leptomeria drupacea</i>	erect currantbush	Much branched shrub to 2 m; leaves are tiny scales on stem; flowers very small, cream; fruit fleshy, reddish.
<i>Leptospermum glaucesc</i>	e smoky teatree	upright shrub/tree to 8m; leaves grey-green to 2cm; flowers white with red centres; fruit small, reddish, leathery
<i>Leptospermum lanigerur</i>	woolly teatree	shrub or small tree; leaves hairy; flowers white, hairy at base; fruit hairy at base
<i>Leptospermum nitidum</i>	e shiny teatree	shrub to 4m; leaves shiny green, to 2cm. Elliptical; flowers white large, 5 petals; fruit hard, scaly, flat-topped, 5 slits
<i>Leptospermum scopariur</i>	common teatree	shrub to 4m; leaves to 2cm with prickly pointed tips; flowers white; fruit with 5 slits, top convex, woody
<i>Leucophyta brownii</i>	cushionbush	compact shrub to 1.5m; leaves stem-clasping, to 5mm; flowers white/yellow globular heads

List

<i>Leucopogon australis</i>		spike beardheath	shrub to 2m; leaves lance-shaped to 4cm; flowers white, tubular, bearded inside
<i>Leucopogon collinus</i>		white beardheath	shrub to 50cm; leaves with edges turned down; flowers tiny, tubular, bearded inside, in clusters at ends of branches
<i>Leucopogon parviflorus</i>		coast beardheath	shrub to 3m; leaves to 3cm, blunt pointed, margins rolled down; flowers white, tubular, bearded inside
<i>Leucopogon virgatus</i>		common beardheath	shrub to 1 m; small white flowers; petals woolly above
<i>Limonium australe</i>	r	yellow sealavender	perennial herb to 40cm high; leaves in rosette, oblong, to 9cm long, grey/green; flowers tubular, yellowish, in groups of 1-3, surrounded by purplish bracts
<i>Linum marginale</i>		native flax	herb; slender stem to 50 cm tall; blue flowers 2 cm diam. on long stems
<i>Lobelia anceps</i>		angled lobelia	perennial herb, prostrate, scrambling; stem with flattened ridges; flowers small, blue, two-lipped
<i>Lobelia pedunculata</i>		matted lobelia	prostrate, ground-covering perennial herb; leaves small, round; flowers white or blue, split tube
<i>Lomatia tinctoria</i>	e	guitarplant	shrub; divided leaves very variable in form; white flowers
<i>Lotus australis</i>		australian trefoil	shrub to 60cm; leaves with 5 leaflets; pink/white pea flowers
<i>Mazus pumilio</i>		swamp mazus	herb; leaves in rosette, dark green above lighter under; flowers small, two-lipped, white/mauve with yellow throat
<i>Melaleuca ericifolia</i>		coast paperbark	tree; white papery bark, profuse white flowers in summer
<i>Melaleuca gibbosa</i>		slender honeymyrtle	shrub to 3m; leaves crowded, to 6mm; flowers mauve/pink bottle brushes to 3cm long
<i>Melaleuca squamea</i>		swamp honeymyrtle	shrub to 3m; leaves to 8mm, hairy; flowers mauve/white in terminal globular heads
<i>Melaleuca squarrosa</i>		scented paperbark	shrub/tree to 6m; leaves to 8mm, ovate, pointed; flowers yellow/cream in terminal bottle brushes
<i>Monotoca glauca</i>		goldey wood	shrub to 3m; leaves to 10mm, sharp points; flowers white, 5 petalled, in small groups
<i>Myoporum insulare</i>		common boobialla	coastal shrub/tree to 3 m; leaves elliptic to 8 cm; flowers 5 white petals with magenta spots.
<i>Nematolepis squamea</i>		satinwood	shrub/tree to 4 m; leaves to 8 cm, green upper surface, silvery below; flowers white/cream, 5 petals with prominent stamens.
<i>Notelaea ligustrina</i>		native olive	small tree; leaves lance-shaped to 5cm; small green to purple fruit
<i>Olearia argophylla</i>		musk daisybush	shrub/tree to 15 m; large leaves with silver back; flowers in large crowded heads.
<i>Olearia lepidophylla</i>		clubmoss daisybush	spreading shrub to 1.5m tall; tiny leaves green above, white/hairy under; white/pink daisy flowers with 4-7 "petals"
<i>Olearia lirata</i>		forest daisybush	shrub to 5m; numerous white daisy flowers at ends of branches

List

<i>Olearia ramulosa</i>	twiggy daisybush	shrub to 2 m; leaves small with rolled edges; flowers white, numerous with 6-10 ray florets.
<i>Olearia stellulata</i>	sawleaf daisybush	shrub to 3m high; leaves elliptical, 5-9cm long, green above, hairy white under; daisy flower heads numerous, white with yellow centres
<i>Opercularia varia</i>	variable stinkweed	herb, prostrate, with unpleasant smell; leaves elliptical, to 8mm long; flowers and fruit coalesced into single mass, 4mm diam
<i>Ornduffia reniformis</i>	running marshflower	fleshy herb in water or on wet mud; leaves kidney-shaped to 10cm across; flowers bright yellow, 2-4cm diam, in groups
<i>Ozothamnus ferrugineus</i>	tree everlastingbush	shrub to 5m; leaves crowded variable, 2-7cm; small white daisy flowers in compact terminal heads
<i>Ozothamnus rosmarinifol</i>	swamp everlastingbush	shrub to 3m high; leaves to 3.5 cm long, linear, hairy white under; flower heads white/pink, in compact, terminal clusters
<i>Pelargonium australe</i>	southern storksbill	herb growing in rock crevices; leaves kidney-shaped; flowers pink/white
<i>Persoonia juniperina</i>	prickly geebung	shrub; to 1.5 m tall; light green prickly leaves; delicate golden flowers
<i>Philotheca virgata</i>	twiggy waxflower	shrub to 2m; stems warty; leaves narrow oblong to 2cm; flowers white star-shaped, 4-5 petals
<i>Phyllanthus gunnii</i>	shrubby spurge	shrub to 3m; new stems red; leaves round; flowers small, white/green, 5 petals, in clusters
<i>Phyllota diffusa</i>	e heath bushpea	spreading shrub to 20cm tall; leaves cylindric, linear, tightly rolled under; yellow pea flowers with red markings
<i>Pimelea humilis</i>	dwarf riceflower	dwarf shrub to 20cm tall; white flowers grouped in terminal heads
<i>Pimelea linifolia</i>	slender riceflower	
<i>Platylobium obtusangulu</i>	common flatpea	shrub to 1 m tall; triangular leaves; yellow pear flowers
<i>Platylobium triangulare</i>	arrow flatpea	scrambling shrub; leaves triangular with sharp tips; flowers orange/yellow pea with bracts that don't conceal the stem.
<i>Pomaderris apetala</i>	common dogwood	shrub/tree to 10 m; leaves to 10 cm with deep veins, white under; flowers cream/green in branched clusters.
<i>Pomaderris elliptica</i>	yellow dogwood	shrub/tree to 8 m; leaves to 10 cm, smooth, rusty under; flowers yellow, clustered.
<i>Pomaderris pilifera</i>		shrub to 4m high; leaves ovate, to 5cm long, hairy under; flowers cream/yellow, 5-petalled, in pyramidal clusters
<i>Poranthera microphylla</i>	small poranthera	small annual herb; leaves sparse, less than 1 cm; flower heads surrounded by leafy bracts
<i>Pultenaea daphnoides</i>	heartleaf bushpea	woody shrub to 2.5 m; leaves wedge-shaped with sharp point at end of central vein; golden pea flowers in terminal heads.
<i>Pultenaea dentata</i>	swamp bushpea	shrub to 90cm tall; leaves to 10mm long, crowded near ends of branches; yellow, pea flowers in small terminal bunches

List

<i>Pultenaea gunnii</i>	golden bushpea	small shrub to 50 cm; leaf shape variable to 1 cm; orange/yellow pea flowers in terminal heads
<i>Pultenaea tenuifolia</i>	slender bushpea	prostrate shrub; leaves to 8mm long, narrow with upper channel; yellow/red pea flowers, solitary, near branch ends
<i>Rhagodia candolleana</i>	coastal saltbush	scrambling shrub to 2 m; leaves fleshy, oval to arrow shaped; flowers terminal clusters followed by flat dark red fruits.
<i>Rhytidosporum procumbens</i>	starry appleberry	dwarf shrub to 10 cm; leaves crowded, stalkless, dark green; flowers starry with 5 white petals
<i>Rubus parvifolius</i>	native raspberry	straggly, prickly shrub to 1m high; leaves with 3 leaflets, green above, white under; flowers pink; fruit a small red raspberry
<i>Sambucus gaudichaudia</i>	white elderberry	shrub to 2m high; leaves with many pairs of opposite leaflets along a ridged stalk; flowers cream/white, in much branched bunches; fruit white, edible
<i>Samolus repens</i>	creeping brookweed	herb spreading by rooting; leaves fleshy, spoon-shaped, to 3cm; flowers white/pink, 5 petals
<i>Sarcocornia quinqueflora</i>	beaded glasswort	succulent herb to 15 cm; leaves fused around stem; flowers hidden.
<i>Scaevola hookeri</i>	creeping fanflower	herb, spreading, prostrate; leaves variable, ovate, hairy; flowers white, hairy outside, petals winged
<i>Schenkia australis</i>	spike centaury	herb to 40cm high (easily confused with weed <i>Centaureum erythraea</i>); flowers pink, in spikes or single
<i>Senecio hispidulus</i>	rough fireweed	herb to 1.25m; leaf with rough upper surface; small flower heads without "petals"
<i>Senecio linearifolius</i>	common fireweed	perennial herb to 2m; leaves narrow linear; yellow daisy flowers in clusters
<i>Senecio minimus</i>	shrubby fireweed	perennial herb to 1.2m high; leaves vble, toothed, lower ones broader, lanceolate, to 15cm long; flower heads without "petals", yellow, numerous
<i>Senecio pinnatifolius</i>		herb to 120cm high; leaves to 10cm long, lobed; daisy flower heads, yellow, to 2.5cm diam, in loose groups
<i>Solanum laciniatum</i>	kangaroo apple	shrub; lobed leaves; large purple flowers; yellow/orange fruit
<i>Sphaerolobium minus</i>	eastern globepea	leafless wiry herb to 75 cm; yellow pea flowers crowded at upper end of stems.
<i>Sprengelia incarnata</i>	pink swampheath	erect shrub to 2m; leaves hard, pointed, sheathing stem; flowers pink/white, in terminal clusters
<i>Spyridium parvifolium</i>		shrub to 50cm high; leaves elliptical, to 12mm long, hairy under, notched ; flowers tiny, creamy, in heads
<i>Stackhousia monogyna</i>	forest candles	herb to 50cm. several erect stems; leaves narrow; flowers white tubular in dense spikes at ends of stems.

List

<i>Stackhousia spathulata</i>	coast candles	perennial herb to 40cm high; leaves to 3cm long, wider at end; flowers white or cream, in dense terminal spikes
<i>Stylidium graminifolium</i>	narrowleaf triggerplant	herb to 50cm; leaves narrow, strap-like; flowers pink, four-petalled, in spikes
<i>Styphelia adscendens</i>	golden heath	prostrate shrub to 50cm; leaves to 3cm, pointed, edges hairy; flowers tubular, yellow/green, hairy inside
<i>Styphelia ericoides</i>	pink beardheath	erect woody shrub to 1m; leaves to 13mm, edges turned down; flowers numerous along branches, white, tubular, hairy inside
<i>Styphelia humifusa</i>	native cranberry	ground cover; prickly leaves; red tube flowers in winter
<i>Tetragonia implexicoma</i>	bower spinach	sprawling undershrub; leaves diamond shaped, succulent to 4 cm; flowers yellow with 4 petals, on long stems.
<i>Tetratheca ciliata</i>	r northern pinkbells	shrub to 80cm high; leaves in whorls of 3-4, 1cm long, rough to touch; flowers mauve with black-tipped stamens
<i>Tetratheca pilosa</i>	hairy pinkbells	shrub to 60 cm tall; pink flowers pendulous on stalks
<i>Trachymene composita</i>		herb to 1.2m high, stems grooved; leaves divided, hairy under; flowers numerous in flat-topped groups on hairy stalks
<i>Utricularia dichotoma</i>	fairies aprons	usually in large numbers in damp soil; violet flowers
<i>Utricularia lateriflora</i>	tiny bladderwort	herb with slender stem, growing in wet mud or water, to 12cm high; leaves usually absent; flowers 3-6, purple,
<i>Veronica derwentiana</i>		perennial herb to 1.5m high; leaves lance-shaped, 6-12cm long; flowers 4-petalled, pale blue or white, in dense spikes
<i>Veronica gracilis</i>	slender speedwell	herb to 10cm; leaves narrow lance-shaped, to 3.5cm; flowers blue, four petalled
<i>Viola hederacea</i>	ivy-leaf violet	herb; perennial, spreading; kidney shaped leaves; violet flowers on stalks
<i>Wahlenbergia gracilentata</i>	annual bluebell	herb; dark blue star-like flowers
<i>Wahlenbergia gracilis</i>	sprawling bluebell	perennial, slender herb to 50cm; leaves narrow; flowers bell-shaped, blue, white centres
<i>Xanthosia dissecta</i>	cutleaf crossherb	herb to 10cm high; leaves leaves divided into 3 lobes with lobes divided again; flowers tiny in groups of 1-3
<i>Xanthosia ternifolia</i>	shrubby crossherb	small shrub; leaves 3-lobed, hairy; flowers tiny, in groups
<i>Xanthosia tridentata</i>	hill crossherb	shrub to 30cm high; leaves 6-15mm long, apex 3-notched; flowers in groups of 1-3
<i>Xerochrysum bicolor</i>	r eastcoast paperdaisy	herb to 80cm high; leaves linear, 3-8cm long, rough-hairy; paper daisy flower heads solitary, white with yellow centre
<i>Zieria arborescens</i>	stinkwood	shrub/tree to 8 m; leaves with 3 leaflets to 10 cm with unpleasant smell when crushed; flowers with 4 white/pink petals.

List

<i>Blechnum nudum</i>	fishbone waterfern	fronds light green divided only once, fertile fronds different
<i>Blechnum wattsii</i>	hard waterfern	fronds dark green, divided only once, fertile fronds different
<i>Dicksonia antarctica</i>	soft treefern	Tall fern, trunks to several metres tall
<i>Microsorium pustulatum</i>	kangaroo fern	growing on trunks of other plants or rocks
<i>Polystichum proliferum</i>	mother shieldfern	note bulbils (new FERN) on fronds
<i>Pteridium esculentum</i>	bracken	common fern to 2.5m tall; leathery much divided frond
<i>Acianthus caudatus</i>	mayfly orchid	tiny brown orchid; heart shaped leaf pressed to the ground
<i>Acianthus pusillus</i>	small mosquito-orchid	
<i>Baloskion tetraphyllum</i>	southern cordrush	rush to 1m; leaves replaced by brown sheaths along flowering stems; flowers in terminal clusters
<i>Burnettia cuneata</i>	lizard orchid	entire plant usually dark purplish brown leaves reduced to fleshy scales sometimes a basal bract flowers 1-7 pink or white lasting one or two days scape to 13cm
<i>Caesia parviflora</i>	pale grass lily	herb to 45 cm; leaves grass-like; 6-petalled gree/white or blue flowers
<i>Caladenia catenata</i>	white fingers	
<i>Caladenia caudata</i>	tailed spider-orchid	
<i>Caladenia dilatata</i>	greencomb spider-orchid	
<i>Caladenia echidnachila</i>	fawn spider-orchid	
<i>Caladenia latifolia</i>	pink fairies	
<i>Caladenia patersonii</i>	t patersons spider-orchid	wiry densely hairy orchid; 1 or 2 flowers to 10 cm across; tepals long narrow
<i>Caleana major</i>	flying duck-orchid	leaf narrowly lanceolate reddish pink with dark spots flowers 1-5 reddish brown and shiny scape to 40cm
<i>Calochilus paludosus</i>	strap beard-orchid	slender orchid to 35cm high; leaf narrow to 18cm long; flowers 1 to 9, to 25mm across, with narrow tail and reddish beard
<i>Chamaescilla corymbosa</i>	blue stars	herb to 25 cm; leaves grass-like; flowers 6-petalled, star-like, blue
<i>Chiloglottis reflexa</i>	autumn bird-orchid	orchid with pair of opposite, elliptical leaves; flowers brown to pink, on stalk to 10cm high
<i>Corybas aconitiflorus</i>	spurred helmet-orchid	small orchid; leaf heart-shaped, green above, purple under; flower single, purple, hooded
<i>Corybas incurvus</i>	slaty helmet-orchid	small orchid; leaf heart-shaped, green below; flower dark purple with white central patch and a fringe of short teeth
<i>Cryptostylis subulata</i>	large tongue-orchid	leaves in small groups lanceolate dark green to yellow-green flowers 3-20 reddish brown scape to 80cm

List

<i>Cychnogeton procerum</i>	greater waterribbons	variable perennial growing in water or wet mud; leaves long, strap-like, floating; flowers in long cylindrical spikes
<i>Cyrtostylis reniformis</i>	small gnat-orchid	tiny orchid; single heart-shaped leaf on ground; tiny flower
<i>Dianella revoluta</i>	flax lily	strap-like leaves; blue & yellow flowers; blue berries, stamen tips yellow
<i>Dianella tasmanica</i>	forest flaxlily	perennial to 1.5m; leaves long, narrow, margins serrated; flowers on long stalks, 6-petaled, blue; fruit a blue/purple shiny berry
<i>Dipodium roseum</i>	rosy hyacinth-orchid	leafless red/brown stem to 80 cm; numerous showy pink flowers
<i>Diuris orientis</i>	eastern wallflower orchid	orchid to 45cm high; leaves linear, to 25cm long; flowers 1 to 6, golden with reddish suffusions,
<i>Drymophila cyanocarpa</i>	turquoise berry	
<i>Eriochilus cucullatus</i>	autumn-orchid	to 30 cm tall pink flower like a parson's bands
<i>Ficinia nodosa</i>	knobby clubsedge	densely tufted rush-like sedge to 90cm; flowers/fruit in compact grey/brown globular head
<i>Gahnia grandis</i>	cutting grass	tufted perennial with narrow grass-like leaves with sharp, rough edges; flowers in spikes on culms to 3m
<i>Gastrodia sesamoides</i>	short potato-orchid	plant leafless inflorescence recurved in bud stage flowers 4-25 cinnamon to grey brown scape to 50cm flowers cinnamon to grey brown scape to 50cm
<i>Glossodia major</i>	waxlip orchid	herb to 30 cm; single hairy leaf; 1 or 2 large purple/mauve flowers
<i>Gymnoschoenus sphaeroc</i>	buttongrass	sedge with dense tufts of leaves to 60cm high; flowers in tight spherical clusters on stalks to 100cm high
<i>Lomandra longifolia</i>	sagg	tussock of strap-like leaves with notched ends; flowers in spiny clusters
<i>Microtis unifolia</i>	common onion-orchid	orchid to 1m high; leaf fleshy, single, to 80cm long; flowers small, numerous, green to yellow, crowded in a terminal spike,
<i>Patersonia fragilis</i>	short purpleflag	
<i>Patersonia occidentalis</i>	native iris, purple flag	densely tufted herb; leaves narrow, flat, to 60cm long; flowers purple, 3-petaled, on stem to 50cm long
<i>Phragmites australis</i>	southern reed	perennial grass, to 3m high, aquatic or in wet mud; flower head to 40cm long, brown, soft, dense
<i>Prasophyllum australe</i>	austral leek-orchid	tall orchid to 90 cm high; leaf to 30cm long, dark green, red at base; flowers appressed to stem, up to 60 in crowded spike
<i>Pterostylis melagramma</i>	* blackstripe greenhood	
<i>Pterostylis nana</i>	dwarf greenhood	orchid to 15cm high; leaves to 15mm long, in rosette; flower solitary, green with thread-like "ears"

List

<i>Pterostylis nutans</i>	nodding greenhood	orchid with single green nodding flower on stem to 30cm
<i>Pterostylis parviflora</i>	tiny greenhood	orchid to 25cm high; leaves stem-clasping; flowers 1-6, inward facing, green- and white-striped
<i>Pterostylis pedoglossa</i>	prawn greenhood	orchid to 15cm high; leaves to 14mm long in rosette; flowers solitary, white with green stripes, long thread-like "nose" and "ears"
<i>Pterostylis pedunculata</i>	maroonhood	orchid with single green flower with maroon "nose" on stem to 25cm
<i>Pterostylis straminea</i>	bearded greenhood	rosette encircles base of stem leaves 8-20 narrowly lanceolate to elliptical light green with darker reticulate veins margins often wavy flower single dark translucent green and white with darker reticulate markings shiny scape to 35cm
<i>Pyrorchis nigricans</i>	fire orchid	leaf broadly ovate to cordate ground hugging bright green often with black markings flowers 2-8 white with prominent red stripes tips dark reddish brown scape to 8-20cm with 2-3 stem bracts
<i>Schoenus lepidosperma</i>		
<i>Thelionema caespitosum</i>	tufted lily	tufted lily with 6 white or blue, pointed sepals and zig-zag yellow stamens
<i>Thelymitra aristata</i>	great sun-orchid	numerous blue flowers on plant to 1 m tall
<i>Thelymitra carnea</i>	tiny sun-orchid	orchid to 35cm high; leaf linear, dark green, to 15cm long; flowers 1-4, pink, to 15mm diam
<i>Thelymitra cyanea</i>	veined sun-orchid	orchid to 40cm high; leaf dark green, to 25cm long; flowers 1-5, blue, to 30mm diam, petals with dark veins
<i>Thelymitra flexuosa</i>	twisted sun-orchid	orchid to 35cm high; leaf to 15cm long, linear; flowers 1-4, cream/yellow, to 15mm across
<i>Thelymitra ixioides</i>	spotted sun-orchid	
<i>Thelymitra nuda</i>	plain sun-orchid	orchid to 45cm high; leaf to 30cm long, linear; flowers 1-8, blue, 25mm across, white hair tufts
<i>Thelymitra pauciflora</i>	slender sun-orchid	numerous blue flowers on plant to 50 cm tall
<i>Thelymitra rubra</i>	pink sun-orchid	1-5 pink flowers on plant to 40 cm tall
<i>Xyris operculata</i>	e tall yelloweye	



PLANT LIST

Rocky Cape National Park

Created 11-Jun-13

Updated 10-May-23

By Margaret Kinsley, Burnie Field Nats, R Skabo

[Goto List](#)



GJ [*Acacia melanoxylon*](#)

blackwood

tree to 30m; leaves with parallel veins; round flower heads



RW [*Acacia mucronata*](#)

subsp. *mucronata*

caterpillar wattle

erect shrub/small tree; leaves narrow linear to 15cm long with short narrow point; yellow flowers in spikes



GJ [*Acacia myrtifolia*](#)

redstem wattle

shrub to 2m; stems red; leaves to 5cm, leathery, single vein; flowers cream in spherical heads



GJ [Acacia stricta](#)

hop wattle
shrub with ridged stems; leaves grey-green, to 10cm long;
paired balls of pale yellow flowers in leaf axils



GJ [Acacia suaveolens](#)

sweet wattle
shrub to 2 m; phyllodes blue/green to 15 cm; flowers round,
cream, in axils, sweet scented.



GJ [Acacia terminalis](#)

sunshine wattle
shrub to 4m high; leaves feathery; flowers in bunches of
spherical heads



GJ [Acacia ulicifolia](#)

juniper wattle
shrub to 50cm high; leaves narrow, linear, pungent pointed;
flowers in cream/yellow spherical heads



GJ [Acacia verticillata](#)

subsp. *verticillata*
prickly moses
shrub/tree to 6 m; phyllodes in whorls, sharp; flowers yellow, in
spikes.



RS [*Acaena novae-zelandiae*](#)

common buzzy
herb; leaves divided; balls of flower/seeds with hooks



GJ [*Acaena ovina*](#)

hairy sheepsburr
herb to 60cm high; leaves feathery, sparsely hairy above,
densely hairy below; spikes of hooked flowers/seeds



GJ [*Acrotriche serrulata*](#)

ants delight
dark green low shrub; prickly leaves; flowers underneath



GJ [*Actites megalocarpus*](#)

dune thistle
perennial herb to 60cm; leaves in basal rosette; leaves to
15cm, lobed, prickly; yellow daisy flowers



GJ [*Ajuga australis*](#)

australian bugle



GJ [*Allocasuarina monilifera*](#)

necklace sheoak
shrub to 4m; leaves like tiny teeth around joints in needle-like branchlets; fruit, cylindrical cones with pointed ends



GJ [*Allocasuarina zephyrea*](#)

western sheoak
shrub to 2m; leaves are small teeth on needle-like branchlets; flowers m & f separate; cones to 3.5cm



GJ [*Almaleea subumbellata*](#)

wiry bushpea
shrub to 90 cm; leaves oblong to 8 mm; yellow/orange pea flowers in bunches at ends of stems



GJ [*Alyxia buxifolia*](#)

seabox
shrub to 2.5m; leaves tough, dark green, glossy, to 3.5cm; flowers white, 5 petals; fruit orange to red



GJ [*Amperea xiphoclada*](#)

broom spurge
almost leafless with angles stems, forms clumps resembling grass tussock



GJ [*Aotus ericoides*](#)

golden pea
shrub to 1.5m; leaves narrow to 12mm long, margins downrolled; yellow pea flower with red throat



GJ [*Apium prostratum*](#)

creeping sea-celery
perennial herb; stems ridged; leaves to 6cm, deeply divided; flowers in dense heads, white, small



GJ [*Argentipallium dealbatum*](#)

white everlasting
herb to 25cm; leaves elliptic, dark green above, white hairy under; flower buds red, flowers single, white, papery



GJ [*Atherosperma moschatum*](#)

sassafras
tree to 25m; leaves to 8cm elliptical, margins often toothed; flowers white, in pairs, pendulous, 4-petaled. Male and female flowers on same or separate trees



GJ [*Atriplex cinerea*](#)

grey saltbush
shrub to 1.5m high; leaves white/grey, scaly, oblong to 6cm long; flowers unisexual, in dense clusters



GJ *Baeckea leptocaulis*

slender heathmyrtle



GJ *Banksia marginata*

silver banksia
tree with typical banksia cones or yellow flower spikes



GJ *Banksia serrata*

saw banksia
shrub or tree to 15m high; leaves to 20cm long, edges sharply serrated; flowers in a dense cylindrical spike, green to yellow



GJ *Bauera rubioides*

wiry bauera
sprawling wiry shrub; leaves opposite, each with three leaflets; flowers white to pink



GJ *Billardiera macrantha*

forest appleberry
vine clammers over other plants; leaves lance-like to 5cm; flowers tubular, yellow/green; fruit blue/purple



GJ [*Billardiera ovalis*](#)

seaspray appleberry
coastal creeper; leaves to 14mm, thick, pale green; flowers tubular; cream/yellow; fruit red



GJ [*Blandfordia punicea*](#)

christmas bells
lily-like herb; leaves strap-like to 1.5m; flowers tubular, red/orange externally yellow internally to 45mm long



GJ [*Boronia anemonifolia*](#)

stinky boronia
shrub to 2m high; leaves dark green, with 3 leaflets, to 1.5cm long; flowers 4-petalled, white/pink

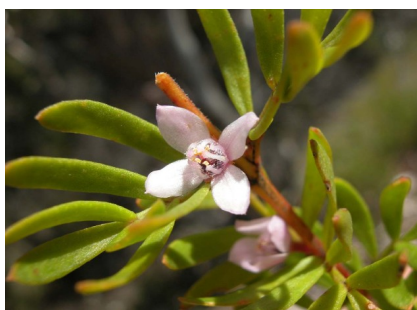


GJ [*Boronia nana*](#)



GJ [*Boronia parviflora*](#)

swamp boronia
prostrate or dwarf shrub; leaves to 2 cm; flowers small with 4 pointed petals.



GJ *Boronia pilosa*
subsp. pilosa
hairy boronia
shrub to 1m; leaves divided with 3-7 leaflets; flowers white to pink with four petals



GJ *Bossiaea cinerea*
showy bossia
shrub with gold/brown pea flowers



GJ *Bossiaea cordigera*
wiry bossia
shrub to 40cm; leaves small, heart-shaped; pea flowers yellow with red centre & outside



GJ *Bossiaea prostrata*
creeping bossia
wiry prostrate stems; yellow & crimson pea flowers



GJ *Brachyloma ciliatum*
fringed heath
shrub, wiry to 30cm high; leaves oblong to ovate, pungent pointed, to 10mm long; flowers solitary, white, tubular with hairs at throat



GJ [*Bursaria spinosa*](#)

prickly box
small tree; distinctive "purses" (seed cases); white starry flowers



GJ [*Calandrinia calyptрата*](#)

pink purslane
herb, spreading to 25cm diam; leaves linear, often cylindrical, fleshy, flowers small, in loose terminal groups



BC [*Calytrix tetragona*](#)

common fringemyrtle
shrub; star-like white flowers



GJ [*Cardamine gunnii*](#)

tuberous bittercress



GJ [*Carpobrotus rossii*](#)

native pigface
herb, prostrate, spreading; leaves fleshy, triangular x-section; flowers large, pink/purple, white centres



GJ [*Cassinia aculeata*](#)

dolly bush
shrub to 3 m; large clusters of small white flowers



GJ [*Cassytha glabella*](#)

slender dodderlaurel
slender parasitic twiner; appears leafless; tiny white flowers in bunches on short stalks



GJ [*Cassytha melantha*](#)

large dodderlaurel
"monkey twine", parasitic on other plants



GJ [*Cassytha pubescens*](#)

downy dodderlaurel
parasitic twiner; appears leafless; flowers small, white, crowded in groups/spikes



GJ [*Centella cordifolia*](#)

swampwort
prostrate marsh herb; leaves almost circular; flowers small, pink in clusters on short stalks



GJ [*Chrysocephalum apiculatum*](#)

common everlasting
perennial herb to 50cm; stem & leaves densely hairy; golden
daisy flowers in clusters



GJ [*Clematis microphylla*](#)

small-leaf clematis
climber to 3m high; leaves twice divided, leaflets to 3cm long;
flowers 4 "petalled", cream



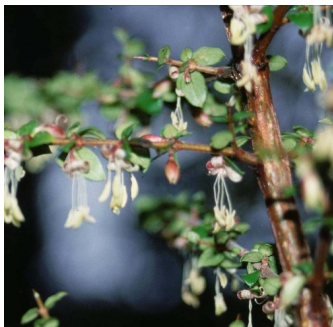
GJ [*Convolvulus angustissimus*](#)

bindweed
herb; prostrate; conspicuous pink funnel-shaped flowers



GJ [*Coprosma hirtella*](#)

coffeeberry
shrub to 2m; leaves dark green, leathery to 6cm long, pointed
tip; fruit red/black, fleshy



GJ [*Coprosma quadrifida*](#)

native currant
erect shrub to 4m; leaves to 10mm; flowers, male & female on
separate plants, 4 white petals; fruit shiny red/orange



GJ *Cotula australis*

southern buttons

small herb, often prostrate; leaves once or twice divided, hairy; flower head solitary, 5mm diam, cream on long stalk



GJ *Daucus glochidiatus*

australian carrot

variable herb, 5-60 cm high; leaves deeply divided; flowers small, white, in flat-topped clusters



RW *Daviesia ulicifolia*

yellow spiky bitterpea

prickly woody shrub to 2 m; leaves spiky to 3 cm; yellow pea flowers with reddish markings.



GJ *Dichondra repens*

kidneyweed

creeping herb, forming patches; kidney shaped leaves; tiny green/white flowers



GJ *Dillwynia cinerascens*

grey parrotpea

slender shrub to 90cm; leaves hairy, narrow cylindrical; goledn pea flowers



GJ *Dillwynia glaberrima*

smooth parrotpea
slender shrub to 90cm; leaves hairless, narrow cylindrical;
golden pea flowers



GJ *Dillwynia sericea*

showy parrotpea
shrub to 60cm high; leaves cylindrical, to 2cm long, grooved
on upper surface; pea flowers orange/yellow, very broad



AS *Disphyma crassifolium*

subsp. clavellatum
roundleaf pigface
fleshy, perennial, prostrate herb; leaves circular in x-section;
flowers pink/white, 3-4cm diam



GJ *Drosera auriculata*

tall sundew
herb; fine stem; leaves fringed with glistening hairs



GJ *Drosera binata*

forked sundew
herb; leaves forked, on long stem, blades with glistening hairs;
flowers white, to 2cm diam, in groups of up to 40



GJ *Drosera gunniana*

pale sundew

erect herb to 30cm high; leaves at base round on stem
crescent shaped, fringed with glistening hairs; flowers white or pink

DW *Drosera macrantha*

subsp. planchonii

sundew

herb; fine stem with round leaves fringed with glistening hairs



GJ *Drosera pygmaea*

dwarf sundew

tiny carnivorous herb; leaves round, fringed with hairs, in basal
rosette; tiny single white flower



GJ *Drosera spatulata*

ray sundew

herb; leaves in a rosette, red, appressed to ground; flowers
white in 1 or 2 groups of several flowers



GJ *Epacris impressa*

common heath

shrub; white, red or pink tubular flowers with dimples at base



GJ [*Epacris lanuginosa*](#)

swamp heath

erect narrow shrub to 1.5m; leaves narrow lance-shaped with sharp point; flowers white, tubular in clusters



GJ [*Epacris obtusifolia*](#)

bluntleaf heath

shrub to 1m high; leaves to 10mm long, elliptical, blunt, appressed to stem; flowers white/cream, tubular



GJ [*Epilobium billardioreanum*](#)



GJ [*Eucalyptus obliqua*](#)

stringybark

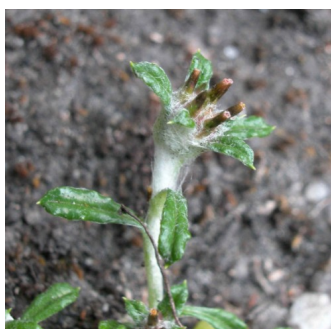
tree to 90m; trunk & branches covered in soft, ridged bark; leaves very unsymmetrical;



GJ [*Eucalyptus ovata*](#)

black gum

large gum tree; rough grey bark; oval leaves



GJ *Euchiton involucratus*

star cottonleaf
herb with white hairy stem to 40cm high; leaves white under;
flowers in dense globular heads



GJ *Euryomyrtus ramosissima*

rosy heathmyrtle
shrub to 50cm; leaves linear to 10mm; flowers ca 10mm diam,
5 white/pink petals



GJ *Exocarpos cupressiformis*

common native-cherry
tree; conifer-like foliage; edible orange coloured fruit



GJ *Galium australe*

coast bedstraw
perennial herb with straggling stems; leaves in whorls of 4;
flowers small, white, in groups of 1-4 along stem



RS *Gaultheria hispida*

copperleaf snowberry
shrub to 1m; leaves dark green, edges serrated; flowers urn
shaped, white/pink; fruit white, fleshy



GJ [*Geranium solanderi*](#)

southern cranesbill
perennial herb; leaves round, deeply divided; flowers pink,
usually paired



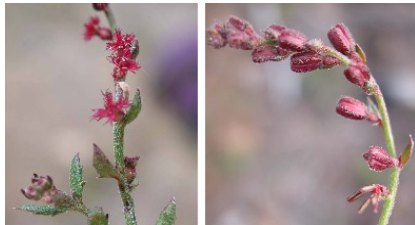
GJ [*Glycine clandestina*](#)

twining glycine
climber with trifoliate leaves & purple flowers



BC [*Gompholobium huegelii*](#)

common wedgepea
herb; pea flower yellow inside and blackish outside



GW [*Gonocarpus tetragynus*](#)

common raspwort
herb with rough stems to 50cm; leaves to 1cm; flowers reddish
at ends of branches



GW [*Gonocarpus teucroides*](#)

forest raspwort
perennial herb to 60 cm; leaves oval and rough to touch;
flowers on leafy spikes with petals often fallen.



GJ [*Goodenia ovata*](#)

hop native-primrose
shrub to 2m; leaves bright green, to 6cm, edges toothed;
flowers yellow with petals in two groups



GJ [*Goodenia radicans*](#)

shiny swamp mat
creeping herb, rooting at leaf nodes and with 5 petal white, fan
flowers



GJ [*Goodia lotifolia*](#)

smooth goldentip
shrub to 4m high; leaves with 3 leaflets;



GJ [*Hakea decurrens*](#)

subsp. physocarpa
bushy needlebush
shrub to 4m high; leaves needle-like, sharply pointed, to 9cm
long; flowers pink or white, spider-like; fruit woody, conical



GJ [*Helichrysum luteoalbum*](#)

jersey cudweed
weedy native, erect with woolly leaves and small, round
flowers with golden bracts



GJ [*Hibbertia acicularis*](#)

prickly guineaflower
shrub to 30cm high; leaves narrow, sharply pointed, to 10mm long; flowers small, yellow, single on stem



RS [*Hibbertia procumbens*](#)

spreading guineaflower
prostrate shrub spreading to 30cm; leaves to 2cm long, edges rolled under; flowers large, yellow very numerous



GJ [*Hibbertia prostrata*](#)

prostrate guineaflower
yellow symmetric five-petal flowers; narrow leaves



GJ [*Hibbertia sericea*](#)

silky guineaflower
shrub to 60cm high; leaves slightly hairy above, densely hairy under; flowers bright yellow, petals notched at tip



GJ [*Hydrocotyle hirta*](#)

hairy pennywort
mat-forming herb with hairy stems; leaves to 25 mm, rounded to kidney shaped with lobed edges; flowers in tight clusters on stem opposite the leaves.



RW *Indigofera australis*

native indigo
shrub to 1.5m high; leaves feather-like, to 10 leaflets; pea
flowers pink/mauve, crowded along branches



GJ *Kennedia prostrata*

running postman
herb; prostrate & sprawling; leaves with 3 leaflets; crimson pea
flower



RS *Lagenophora stipitata*

blue bottledaisy
rosette herb; leaves hairy, to 8cm long; single flower head
white or purplish on long hairy stem



GJ *Lasiopetalum baueri*

slender velvetbush
shrub to 1.5m high; leaves linear, to 7cm long, darker above,
hairy under; flowers in drooping clusters, pink or white



GJ *Lasiopetalum macrophyllum*

shrubby velvetbush
shrub to 2m high; leaves ovate to 10cm long, rusty hairs along
veins, white/green under; flowers small, white, in pendant
clusters



GJ *Leptinella reptans*

creeping buttons

herb, creeping stems, prostrate; leaves hairy, twice divided;
flower heads 8mm diam, yellow, on slender stems



GJ *Leptomeria drupacea*

erect currantbush

Much branched shrub to 2 m; leaves are tiny scales on stem;
flowers very small, cream; fruit fleshy, reddish.



GJ *Leptospermum glaucescens*

smoky teatree

upright shrub/tree to 8m; leaves grey-green to 2cm; flowers
white with red centres; fruit small, reddish, leathery



RS *Leptospermum lanigerum*

woolly teatree

shrub or small tree; leaves hairy; flowers white, hairy at base;
fruit hairy at base



GJ *Leptospermum nitidum*

shiny teatree

shrub to 4m; leaves shiny green, to 2cm. Elliptical; flowers
white large, 5 petals; fruit hard, scaly, flat-topped, 5 slits



GJ [*Leptospermum scoparium*](#)

common teatree
shrub to 4m; leaves to 2cm with prickly pointed tips; flowers white; fruit with 5 slits, top convex, woody



GJ [*Leucophyta brownii*](#)

cushionbush
compact shrub to 1.5m; leaves stem-clasping, to 5mm; flowers white/yellow globular heads



GJ [*Leucopogon australis*](#)

spike beardheath
shrub to 2m; leaves lance-shaped to 4cm; flowers white, tubular, bearded inside



BC [*Leucopogon collinus*](#)

white beardheath
shrub to 50cm; leaves with edges turned down; flowers tiny, tubular, bearded inside, in clusters at ends of branches



GJ [*Leucopogon parviflorus*](#)

coast beardheath
shrub to 3m; leaves to 3cm, blunt pointed, margins rolled down; flowers white, tubular, bearded inside



BC *Leucopogon virgatus*

common beard-heath
shrub to 1 m; small white flowers; petals woolly above



GJ *Limonium australe*

yellow sealavender
perennial herb to 40cm high; leaves in rosette, oblong, to 9cm long, grey/green; flowers tubular, yellowish, in groups of 1-3, surrounded by purplish bracts



GJ *Linum marginale*

native flax
herb; slender stem to 50 cm tall; blue flowers 2 cm diam. on long stems



GJ *Lobelia anceps*

angled lobelia
perennial herb, prostrate, scrambling; stem with flattened ridges; flowers small, blue, two-lipped



GJ *Lobelia pedunculata*

matted lobelia
prostrate, ground-covering perennial herb; leaves small, round; flowers white or blue, split tube



GJ [*Lomatia tinctoria*](#)

guitarplant
shrub; divided leaves very variable in form; white flowers



GJ [*Lotus australis*](#)

australian trefoil
shrub to 60cm; leaves with 5 leaflets; pink/white pea flowers



GJ [*Mazus pumilio*](#)

swamp mazus
herb; leaves in rosette, dark green above lighter under; flowers small, two-lipped, white/mauve with yellow throat



GJ [*Melaleuca ericifolia*](#)

coast paperbark
tree; white papery bark, profuse white flowers in summer



GJ [*Melaleuca gibbosa*](#)

slender honeymyrtle
shrub to 3m; leaves crowded, to 6mm; flowers mauve/pink
bottle brushes to 3cm long



GJ *Melaleuca squamea*

swamp honeymyrtle
shrub to 3m; leaves to 8mm, hairy; flowers mauve/white in terminal globular heads



GJ *Melaleuca squarrosa*

scented paperbark
shrub/tree to 6m; leaves to 8mm, ovate, pointed; flowers yellow/cream in terminal bottle brushes



RW *Monotoca glauca*

goldey wood
shrub to 3m; leaves to 10mm, sharp points; flowers white, 5 petalled, in small groups



GJ *Myoporum insulare*

common boobialla
coastal shrub/tree to 3 m; leaves elliptic to 8 cm; flowers 5 white petals with magenta spots.



GJ *Nematolepis squamea*

subsp. squamea
satinwood
shrub/tree to 4 m; leaves to 8 cm, green upper surface, silvery below; flowers white/cream, 5 petals with prominent stamens.



GJ [*Notelaea ligustrina*](#)

native olive
small tree; leaves lance-shaped to 5cm; small green to purple
fruit



GJ [*Olearia argophylla*](#)

musk daisybush
shrub/tree to 15 m; large leaves with silver back; flowers in
large crowded heads.



GJ [*Olearia lepidophylla*](#)

clubmoss daisybush
spreading shrub to 1.5m tall; tiny leaves green above,
white/hairy under; white/pink daisy flowers with 4-7 "petals"



GJ [*Olearia lirata*](#)

forest daisybush
shrub to 5m; numerous white daisy flowers at ends of
branches



GJ [*Olearia ramulosa*](#)

twiggy daisybush
shrub to 2 m; leaves small with rolled edges; flowers white,
numerous with 6-10 ray florets.



GJ *Olearia stellulata*

sawleaf daisybush

shrub to 3m high; leaves elliptical, 5-9cm long, green above, hairy white under; daisy flower heads numerous, white with yellow centres



GJ *Opercularia varia*

variable stinkweed

herb, prostrate, with unpleasant smell; leaves elliptical, to 8mm long; flowers and fruit coalesced into single mass, 4mm diam



GJ *Ornduffia reniformis*

running marshflower

fleshy herb in water or on wet mud; leaves kidney-shaped to 10cm across; flowers bright yellow, 2-4cm diam, in groups



RW *Ozothamnus ferrugineus*

tree everlastingbush

shrub to 5m; leaves crowded variable, 2-7cm; small white daisy flowers in compact terminal heads



GJ *Ozothamnus rosmarinifolius*

swamp everlastingbush

shrub to 3m high; leaves to 3.5 cm long, linear, hairy white under; flower heads white/pink, in compact, terminal clusters



GJ *Pelargonium australe*

southern storksbill
herb growing in rock crevices; leaves kidney-shaped; flowers pink/white



GJ *Persoonia juniperina*

prickly geebung
shrub; to 1.5 m tall; light green prickly leaves; delicate golden flowers



GJ *Philothea virgata*

twiggy waxflower
shrub to 2m; stems warty; leaves narrow oblong to 2cm;
flowers white star-shaped, 4-5 petals



GJ *Phyllanthus gunnii*

shrubby spurge
shrub to 3m; new stems red; leaves round; flowers small,
white/green, 5 petals, in clusters



GJ *Phyllota diffusa*

heath bushpea
spreading shrub to 20cm tall; leaves cylindrical, linear, tightly
rolled under; yellow pea flowers with red markings



GJ *Pimelea humilis*

dwarf riceflower
dwarf shrub to 20cm tall; white flowers grouped in terminal heads



GJ *Pimelea linifolia*

slender riceflower



GJ *Platylobium obtusangulum*

common flatpea
shrub to 1 m tall; triangular leaves; yellow pear flowers



GJ *Platylobium triangulare*

arrow flatpea
scrambling shrub; leaves triangular with sharp tips; flowers orange/yellow pea with bracts that don't conceal the stem.



GJ *Pomaderris apetala*

common dogwood
shrub/tree to 10 m; leaves to 10 cm with deep veins, white under; flowers cream/green in branched clusters.



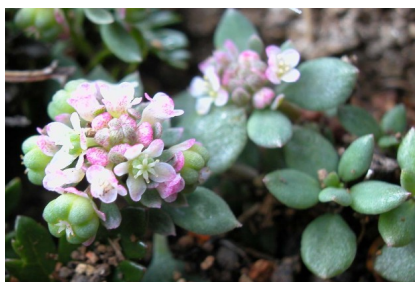
GJ [*Pomaderris elliptica*](#)

yellow dogwood
shrub/tree to 8 m; leaves to 10 cm, smooth, rusty under;
flowers yellow, clustered.



GJ [*Pomaderris pilifera*](#)

shrub to 4m high; leaves ovate, to 5cm long, hairy under;
flowers cream/yellow, 5-petalled, in pyramidal clusters



GJ [*Poranthera microphylla*](#)

small poranthera
small annual herb; leaves sparse, less than 1 cm; flower heads
surrounded by leafy bracts



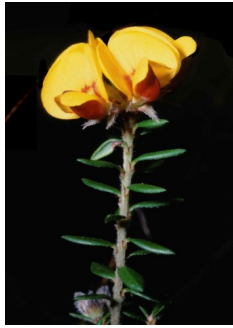
GJ [*Pultenaea daphnoides*](#)

heartleaf bushpea
woody shrub to 2.5 m; leaves wedge-shaped with sharp point
at end of central vein; golden pea flowers in terminal heads.



GJ [*Pultenaea dentata*](#)

swamp bushpea
shrub to 90cm tall; leaves to 10mm long, crowded near ends of
branches; yellow, pea flowers in small terminal bunches



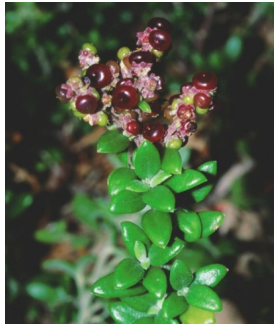
GJ [*Pultenaea gunnii*](#)

golden bushpea
small shrub to 50 cm; leaf shape variable to 1 cm;
orange/yellow pea flowers in terminal heads



GJ [*Pultenaea tenuifolia*](#)

slender bushpea
prostrate shrub; leaves to 8mm long, narrow with upper
channel; yellow/red pea flowers, solitary, near branch ends



GJ [*Rhagodia candolleana*](#)

subsp. *candolleana*
coastal saltbush
scrambling shrub to 2 m; leaves fleshy, oval to arrow shaped;
flowers terminal clusters followed by flat dark red fruits.



RW [*Rhytidosporum procumbens*](#)

starry appleberry
dwarf shrub to 10 cm; leaves crowded, stalkless, dark green;
flowers starry with 5 white petals



GJ [*Rubus parvifolius*](#)

native raspberry
straggly, prickly shrub to 1m high; leaves with 3 leaflets, green
above, white under; flowers pink; fruit a small red raspberry



GJ [*Sambucus gaudichaudiana*](#)

white elderberry
shrub to 2m high; leaves with many pairs of opposite leaflets along a ridged stalk; flowers cream/white, in much branched bunches; fruit white, edible



RW [*Samolus repens*](#)

creeping brookweed
herb spreading by rooting; leaves fleshy, spoon-shaped, to 3cm; flowers white/pink, 5 petals



GJ [*Sarcocornia quinqueflora*](#)

beaded glasswort
succulent herb to 15 cm; leaves fused around stem; flowers hidden.



GJ [*Scaevola hookeri*](#)

creeping fanflower
herb, spreading, prostrate; leaves variable, ovate, hairy; flowers white, hairy outside, petals winged

[*Schenkia australis*](#)

spike centaury
herb to 40cm high (easily confused with weed Centaurium erythraea); flowers pink, in spikes or single



GJ *Senecio hispidulus*

rough fireweed

herb to 1.25m; leaf with rough upper surface; small flower heads without "petals"



GJ *Senecio linearifolius*

common fireweed

perennial herb to 2m; leaves narrow linear; yellow daisy flowers in clusters



GJ *Senecio minimus*

shrubby fireweed

perennial herb to 1.2m high; leaves vble, toothed, lower ones broader, lanceolate, to 15cm long; flower heads without "petals", yellow, numerous



RS *Senecio pinnatifolius*

var. pinnatifolius

herb to 120cm high; leaves to 10cm long, lobed; daisy flower heads, yellow, to 2.5cm diam, in loose groups



GJ *Solanum laciniatum*

kangaroo apple

shrub; lobed leaves; large purple flowers; yellow/orange fruit



GJ *Sphaerolobium minus*

eastern globepea
leafless wiry herb to 75 cm; yellow pea flowers crowded at upper end of stems.



GJ *Sprengelia incarnata*

pink swampheath
erect shrub to 2m; leaves hard, pointed, sheathing stem; flowers pink/white, in terminal clusters



GJ *Spyridium parvifolium*
var. parvifolium

shrub to 50cm high; leaves elliptical, to 12mm long, hairy under, notched ; flowers tiny, creamy, in heads



GJ *Stackhousia monogyna*

forest candles
herb to 50cm. several erect stems; leaves narrow; flowers white tubular in dense spikes at ends of stems.



GJ *Stackhousia spathulata*

coast candles
perennial herb to 40cm high; leaves to 3cm long, wider at end; flowers white or cream, in dense terminal spikes



BC [*Stylidium graminifolium*](#)

narrowleaf triggerplant
herb to 50cm; leaves narrow, strap-like; flowers pink, four-petaled, in spikes



GJ [*Styphelia adscendens*](#)

golden heath
prostrate shrub to 50cm; leaves to 3cm, pointed, edges hairy; flowers tubular, yellow/green, hairy inside



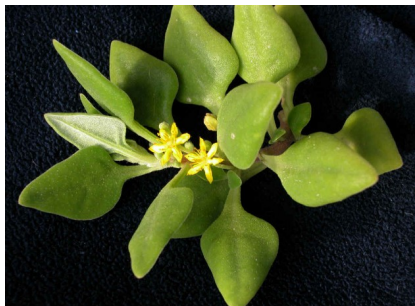
GJ [*Styphelia ericoides*](#)

pink beardheath
erect woody shrub to 1m; leaves to 13mm, edges turned down; flowers numerous along branches, white, tubular, hairy inside



GJ [*Styphelia humifusa*](#)

native cranberry
ground cover; prickly leaves; red tube flowers in winter



GJ [*Tetragonia implexicoma*](#)

bower spinach
sprawling undershrub; leaves diamond shaped, succulent to 4 cm; flowers yellow with 4 petals, on long stems.



GJ *Tetradthea ciliata*

northern pinkbells
shrub to 80cm high; leaves in whorls of 3-4, 1cm long, rough to touch; flowers mauve with black-tipped stamens



GJ *Tetradthea pilosa*

hairy pinkbells
shrub to 60 cm tall; pink flowers pendulous on stalks



GJ *Trachymene composita*
var. *composita*

herb to 1.2m high, stems grooved; leaves divided, hairy under;
flowers numerous in flat-topped groups on hairy stalks



GJ *Utricularia dichotoma*

fairies aprons
usually in large numbers in damp soil; violet flowers



GJ *Utricularia lateriflora*

tiny bladderwort
herb with slender stem, growing in wet mud or water, to 12cm high; leaves usually absent; flowers 3-6, purple,



GJ [Veronica derwentiana](#)
subsp. derwentiana

perennial herb to 1.5m high; leaves lance-shaped, 6-12cm long; flowers 4-petalled, pale blue or white, in dense spikes



GJ [Veronica gracilis](#)

slender speedwell
herb to 10cm; leaves narrow lance-shaped, to 3.5cm; flowers blue, four petalled



GJ [Viola hederacea](#)

ivy-leaf violet
herb; perennial, spreading; kidney shaped leaves; violet flowers on stalks



GJ [Wahlenbergia gracilentia](#)

annual bluebell
herb; dark blue star-like flowers



RW [Wahlenbergia gracilis](#)

sprawling bluebell
perennial, slender herb to 50cm; leaves narrow; flowers bell-shaped, blue, white centres



GJ [*Xanthosia dissecta*](#)

cutleaf crossherb

herb to 10cm high; leaves divided into 3 lobes with lobes divided again; flowers tiny in groups of 1-3



GJ [*Xanthosia ternifolia*](#)

shrubby crossherb

small shrub; leaves 3-lobed, hairy; flowers tiny, in groups



GJ [*Xanthosia tridentata*](#)

hill crossherb

shrub to 30cm high; leaves 6-15mm long, apex 3-notched; flowers in groups of 1-3



GJ [*Xerochrysum bicolor*](#)

eastcoast paperdaisy

herb to 80cm high; leaves linear, 3-8cm long, rough-hairy; paper daisy flower heads solitary, white with yellow centre



GJ [*Zieria arborescens*](#)

stinkwood

shrub/tree to 8 m; leaves with 3 leaflets to 10 cm with unpleasant smell when crushed; flowers with 4 white/pink petals.



GJ *Blechnum nudum*

fishbone waterfern
fronds light green divided only once, fertile fronds different



GJ *Blechnum wattsii*

hard waterfern
fronds dark green, divided only once, fertile fronds different



GJ *Dicksonia antarctica*

soft treefern
Tall fern, trunks to several metres tall



GJ *Microsorium pustulatum*

kangaroo fern
growing on trunks of other plants or rocks

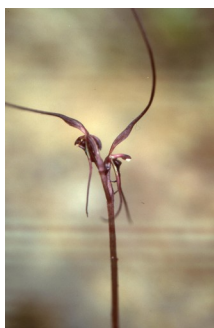


GJ *Polystichum proliferum*

mother shieldfern
note bulbils (new FERN) on fronds



GJ *Pteridium esculentum*
subsp. *esculentum*
bracken
common fern to 2.5m tall; leathery much divided frond



JC *Acianthus caudatus*

mayfly orchid
tiny brown orchid; heart shaped leaf pressed to the ground



GJ *Acianthus pusillus*

small mosquito-orchid



GJ *Baloskion tetraphyllum*

southern cordrush
rush to 1m; leaves replaced by brown sheaths along flowering stems; flowers in terminal clusters



GJ *Burnettia cuneata*

lizard orchid
entire plant usually dark purplish brown leaves reduced to fleshy scales sometimes a basal bract flowers 1-7 pink or white lasting one or two days scape to 13cm



GJ [Caesia parviflora](#)

pale grass lily
herb to 45 cm; leaves grass-like; 6-petalled green/white or blue
flowers

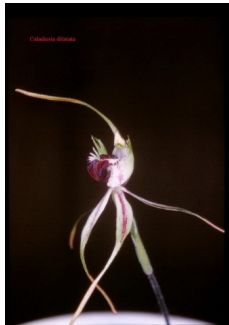
[Caladenia catenata](#)

white fingers



JC [Caladenia caudata](#)

tailed spider-orchid



JC [Caladenia dilatata](#)

greencomb spider-orchid



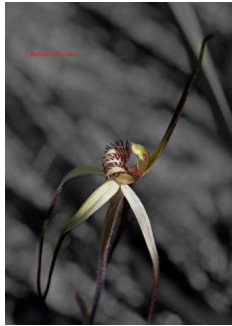
JC [Caladenia echidnachila](#)

fawn spider-orchid



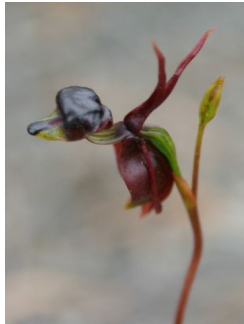
GJ *Caladenia latifolia*

pink fairies



JC *Caladenia patersonii*

patersons spider-orchid
wiry densely hairy orchid; 1 or 2 flowers to 10 cm across;
tepals long narrow



JC *Caleana major*

flying duck-orchid
leaf narrowly lanceolate reddish pink with dark spots flowers 1-
5 reddish brown and shiny scape to 40cm



GJ *Calochilus paludosus*

strap beard-orchid
slender orchid to 35cm high; leaf narrow to 18cm long; flowers
1 to 9, to 25mm across, with narrow tail and reddish beard



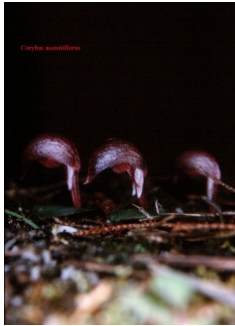
TY *Chamaescilla corymbosa*

blue stars
herb to 25 cm; leaves grass-like; flowers 6-petalled, star-like,
blue



GJ *Chiloglottis reflexa*

autumn bird-orchid
orchid with pair of opposite, elliptical leaves; flowers brown to pink, on stalk to 10cm high



JC *Corybas aconitiflorus*

spurred helmet-orchid
small orchid; leaf heart-shaped, green above, purple under;
flower single, purple, hooded



GJ *Corybas incurvus*

slaty helmet-orchid
small orchid; leaf heart-shaped, green below; flower dark purple with white central patch and a fringe of short teeth



JC *Cryptostylis subulata*

large tongue-orchid
leaves in small groups lanceolate dark green to yellow-green
flowers 3-20 reddish brown scape to 80cm

Cycnogeton procerum

greater waterribbons
variable perennial growing in water or wet mud; leaves long, strap-like, floating; flowers in long cylindrical spikes



GJ *Cyrtostylis reniformis*

small gnat-orchid
tiny orchid; single heart-shaped leaf on ground; tiny flower



GJ *Dianella revoluta*

flax lily
strap-like leaves; blue & yellow flowers; blue berries, stamen tips yellow



BC *Dianella tasmanica*

forest flaxlily
perennial to 1.5m; leaves long, narrow, margins serrated;
flowers on long stalks, 6-petaled, blue; fruit a blue/purple shiny berry



GJ *Dipodium roseum*

rosy hyacinth-orchid
leafless red/brown stem to 80 cm; numerous showy pink flowers

Diuris orientis

eastern wallflower orchid
orchid to 45cm high; leaves linear, to 25cm long; flowers 1 to 6,
golden with reddish suffusions,



GJ [*Drymophila cyanocarpa*](#)

turquoise berry



GJ [*Eriochilus cucullatus*](#)

autumn-orchid
to 30 cm tall pink flower like a parson's bands



GJ [*Ficinia nodosa*](#)

knobby clubsedge
densely tufted rush-like sedge to 90cm; flowers/fruit in compact grey/brown globular head



GJ [*Gahnia grandis*](#)

cutting grass
tufted perennial with narrow grass-like leaves with sharp, rough edges; flowers in spikes on culms to 3m



JC [*Gastrodia sesamoides*](#)

short potato-orchid
plant leafless inflorescence recurved in bud stage flowers 4-25
cinnamon to grey brown scape to 50cm flowers cinnamon to
grey brown scape to 50cm



GJ *Glossodia major*

waxlip orchid
herb to 30 cm; single hairy leaf; 1 or 2 large purple/mauve flowers



GJ *Gymnoschoenus sphaerocephalus*

buttongrass
sedge with dense tufts of leaves to 60cm high; flowers in tight spherical clusters on stalks to 100cm high



GJ *Lomandra longifolia*

sagg
tussock of strap-like leaves with notched ends; flowers in spiny clusters



GJ *Microtis unifolia*

common onion-orchid
orchid to 1m high; leaf fleshy, single, to 80cm long; flowers small, numerous, green to yellow, crowded in a terminal spike,



GJ *Patersonia fragilis*

short purpleflag

Patersonia occidentalis

native iris, purple flag
densely tufted herb; leaves narrow, flat, to 60cm long; flowers purple, 3-petaled, on stem to 50cm long



GJ *Phragmites australis*

southern reed
perennial grass, to 3m high, aquatic or in wet mud; flower head to 40cm long, brown, soft, dense



JC *Prasophyllum australe*

austral leek-orchid
tall orchid to 90 cm high; leaf to 30cm long, dark green, red at base; flowers appressed to stem, up to 60 in crowded spike



GJ *Pterostylis melagramma*

blackstripe greenhood



JC *Pterostylis nana*

dwarf greenhood
orchid to 15cm high; leaves to 15mm long, in rosette; flower solitary, green with thread-like "ears"



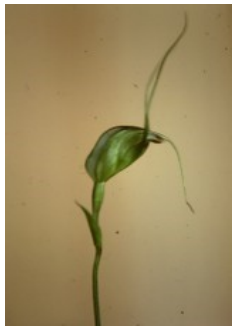
GJ *Pterostylis nutans*

nodding greenhood
orchid with single green nodding flower on stem to 30cm



JC *Pterostylis parviflora*

tiny greenhood
orchid to 25cm high; leaves stem-clasping; flowers 1-6, inward facing, green- and white-striped



JC *Pterostylis pedoglossa*

prawn greenhood
orchid to 15cm high; leaves to 14mm long in rosette; flowers solitary, white with green stripes, long thread-like "nose" and "ears"



GJ *Pterostylis pedunculata*

maroonhood
orchid with single green flower with maroon "nose" on stem to 25cm



JC *Pterostylis straminea*

bearded greenhood
rosette encircles base of stem leaves 8-20 narrowly lanceolate to elliptical light green with darker reticulate veins margins often wavy flower single dark translucent green and white with darker reticulate markings shiny scape to 35cm



RS *Pyrorchis nigricans*

fire orchid

leaf broadly ovate to cordate ground hugging bright green often with black markings flowers 2-8 white with prominent red stripes tips dark reddish brown scape to 8-20cm with 2-3 stem bracts

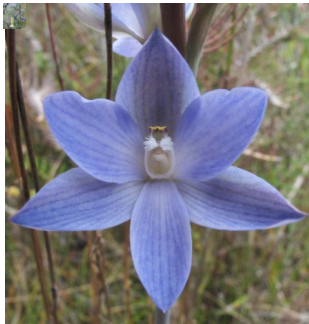
Schoenus lepidosperma



GJ *Thelionema caespitosum*

tufted lily

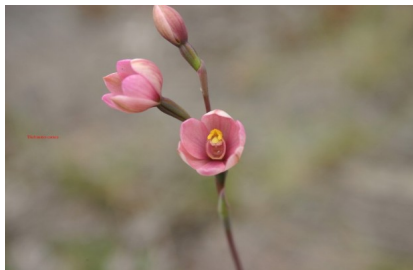
tufted lily with 6 white or blue, pointed sepals and zig-zag yellow stamens



GJ *Thelymitra aristata*

great sun-orchid

numerous blue flowers on plant to 1 m tall



JC *Thelymitra carnea*

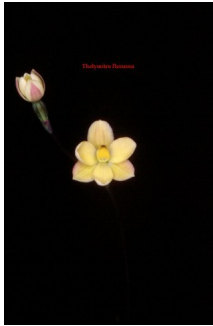
tiny sun-orchid

orchid to 35cm high; leaf linear, dark green, to 15cm long; flowers 1-4, pink, to 15mm diam



GJ *Thelymitra cyanea*

veined sun-orchid
orchid to 40cm high; leaf dark green, to 25cm long; flowers 1-5, blue, to 30mm diam, petals with dark veins



JC *Thelymitra flexuosa*

twisted sun-orchid
orchid to 35cm high; leaf to 15cm long, linear; flowers 1-4, cream/yellow, to 15mm across



GJ *Thelymitra ixioides*

spotted sun-orchid

Thelymitra nuda

plain sun-orchid
orchid to 45cm high; leaf to 30cm long, linear; flowers 1-8, blue, 25mm across, white hair tufts



GJ *Thelymitra pauciflora*

slender sun-orchid
numerous blue flowers on plant to 50 cm tall



GJ [Thelymitra rubra](#)

pink sun-orchid
1-5 pink flowers on plant to 40 cm tall



BC [Xyris operculata](#)

tall yelloweye